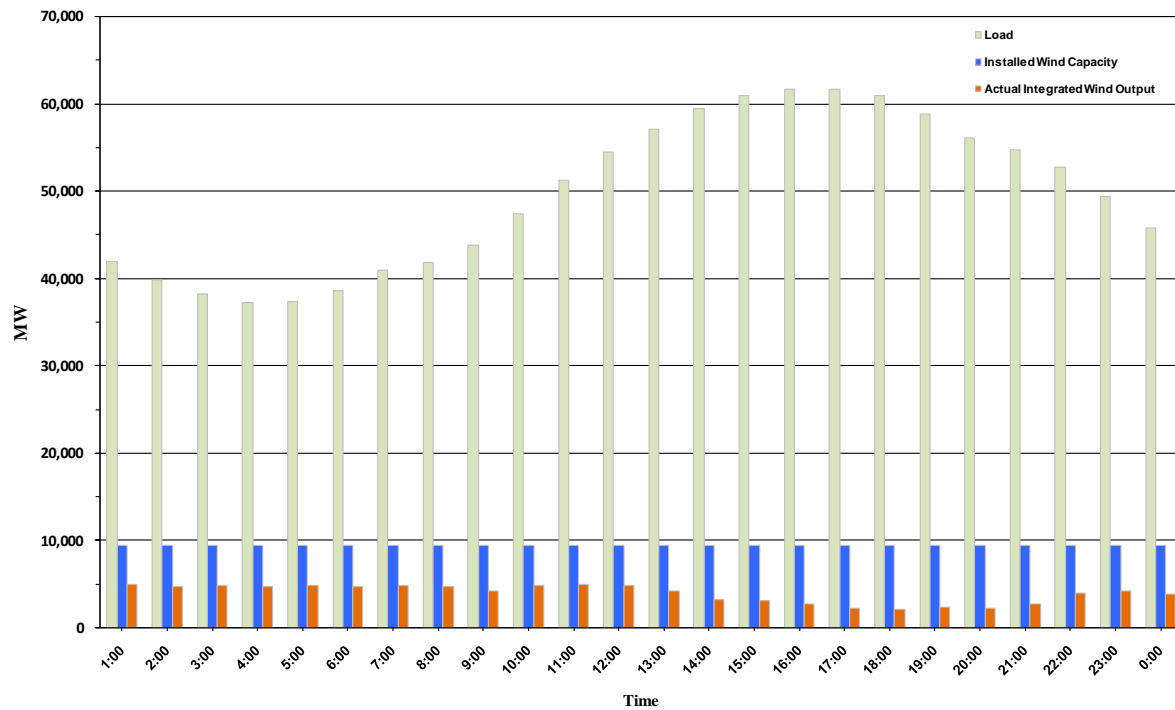




ERCOT Grid Operations Wind Penetration Report: 08/20/10

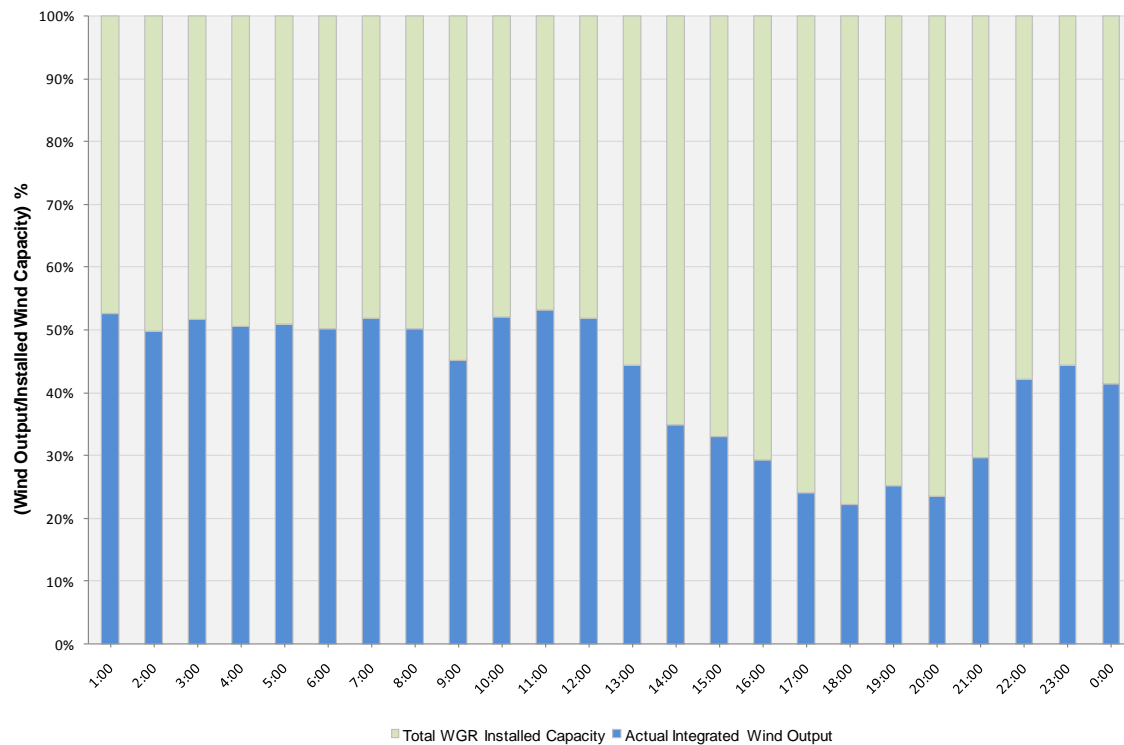
Peak Load	61,666 MW
Load Peak Hour	16
Wind Record 06/12/10	7016 MW
Max Wind value	5270 MW
Wind Peak Hour	00:36:32
Wind Penetration %	12.62

Hourly Average Actual Load vs. Actual Wind Output
08-20-2010

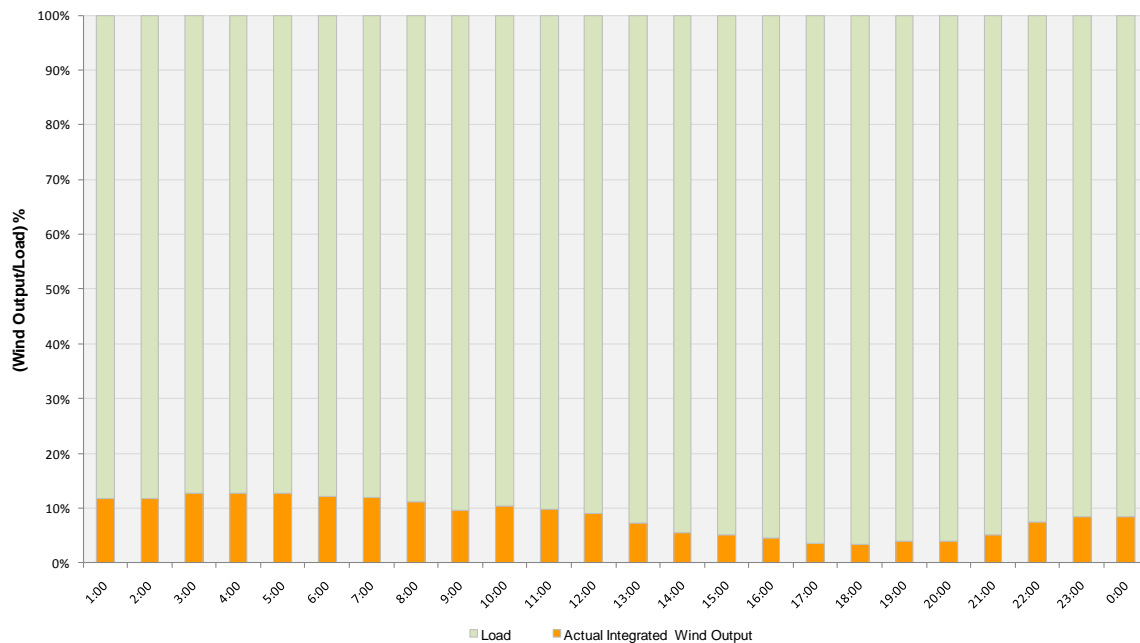




Actual Wind Output as a Percentage of the Total Installed Wind Capacity
08-20-2010



Actual Wind Output as a Percentage of the ERCOT Load
08-20-2010





ERCOT Load vs. Actual Wind Output 08/13/10 - 08/20/10

